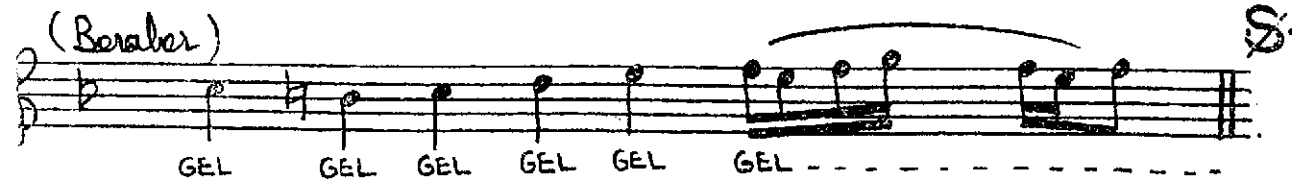
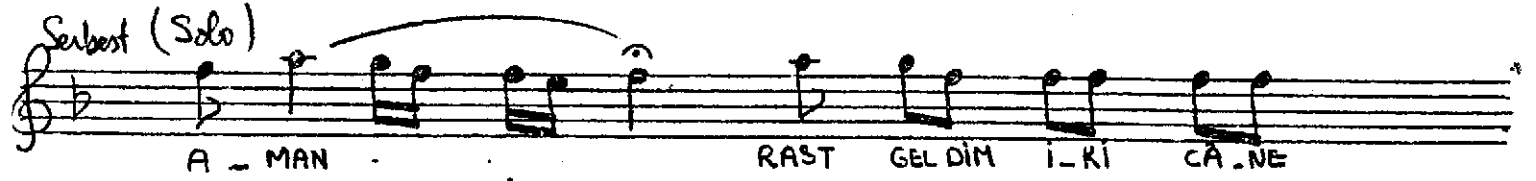
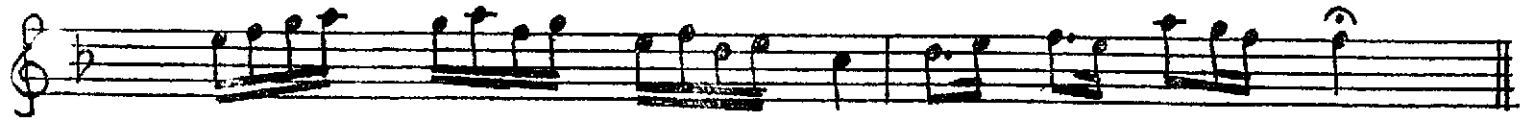


ACEMAŞIRAN TÜRKÜ
Rast geldim iki câne [MAVİLİ]

SOF-YAN S.



KODA



-2-

KARELİDE VARDIR EDÂ
PEMBELİYE SÖZ YOK ASLA
YEŞİLLİDE GÜZEL AMMA
İLLE MAVİLİ MAVİLİ.

-3-

AL GİYENİ ALSAM YANINA
MOR GİYENİ SARSAM SİNEME
BEYAZLI DA GÜZEL AMMA
İLLE MAVİLİ MAVİLİ